

**THE INVISIBLE DOG**

# Ahlan Wa Sahlan

A Group Show  
Curated by Lucien Zayan  
at The Invisible Dog Art Center



**JANUARY 9 - AUGUST 7, 2021**

**FEATURED ARTISTS**

2fik, Mathis Altmann, Francisca Benitez, Malcolm Brown,  
Jean-Christian Bourcart, Simon Courchel, Christopher Daniels,  
Danielle Durchslag, Nicolas Enriquez, Shannon Finnegan,  
Camille de Galbert, Ryan Frank, Oliver Jeffers, Alan Kleinberg,  
Noah Klersfeld, Steven and William Ladd, Anne Mourier,  
Stephen Morrison, Christopher Robin Nordström, Mac Premo,  
Naji Raji, Aaron Ruff, Alexandria Smith



中央警察八丁堀交番

八丁堀三丁目7番



# Ahlan Wa Sahlan

For almost a year now, the place where we live has taken on a new meaning. Our relationships with objects, people, pets, plants, and even solitude itself have dramatically changed.

I had the idea for this exhibition while gazing at Swedish artist Christopher Robin Nordström's miniature sculpture, a 1:20 scale replica of a Japanese Kōban. I noticed a resonance between the Kōban—the centerpiece of the show—and many other pieces in my personal collection.

A Kōban is a small neighborhood police station. The police officers who work there have the mission to respond to emergencies and keep the citizens safe, but most importantly to give directions in a country where finding your way can be a common struggle. Affectionately called “omawari-san”, meaning dear patrol officer, they are perceived as familiar faces and helping hands. Unlike a more imposing police precinct, a Kōban is a refuge, a shelter.

How does this connect the works in this exhibition? What unites a Japanese Kōban and a German brothel? How does a bedroom in Morocco relate to an isolated shed in the middle of the woods in upstate NY?

Each of the pieces I have selected for this exhibition describe our desire for intimacy in confined spaces: sometimes safe, sometimes dangerous. They highlight our personal tragedies and vulnerabilities. In a grander sense, they display our exceptional destinies and expose the profoundness of our collective story.

Before this show, all these artworks were living close to each other on the wall of my apartment without specific interaction. Now, they look at each other, answer one another, and communicate.

For this public exhibition I invite you to join me in appreciating these artists and enter into the world I typically share with my partner and a few friends. In doing so, I hope to rebuild some of the social connections that we have been deprived of for far too long.

Ahlan Wa Sahlan, Welcome, Bienvenue.

Lucien Zayan

# 2Fik



## 2Fik

*Domestic Violence F*, 2015  
Plexiglas, paper,  
and aluminum  
30 x 20 inches

### Image Description

A photograph of two people wearing zentai suits (skin-tight garments that cover the entire body) having a physical altercation in a brightly lit bedroom with a French decor. One is falling into the bed while the other is making a slapping motion with one hand.

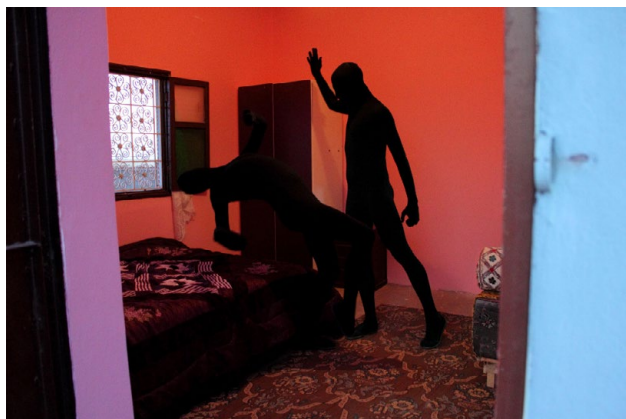


## 2Fik

*Domestic Violence Q*, 2015  
Plexiglas, paper,  
and aluminum  
30 x 20 inches

### Image Description

A photograph of two people wearing zentai suits (skin-tight garments that cover the entire body) having a physical altercation in a partially lit bedroom with a Quebec decor. One is falling into the bed while the other is making a slapping motion with one hand.



**2Fik**

*Domestic Violence M*, 2015  
Plexiglas, paper, and aluminum  
30 x 20 inches

**Image Description**

A photograph of two people wearing zentai suits (skin-tight garments that cover the entire body) having a physical altercation in a bedroom with a Moroccan decor that is lit by a red light. One is falling into the bed while the other is making a slapping motion with one hand.

*For his third solo show at The Invisible Dog in 2015, I asked 2Fik to make himself disappear. Such a challenge because 2Fik works primarily with self-portraiture. 3C by 2Fik was a very different project compared to his usual work and did not meet the expectations of his audience. But it has given the artist a new direction to his practice. Ultimately, it was a great success.*

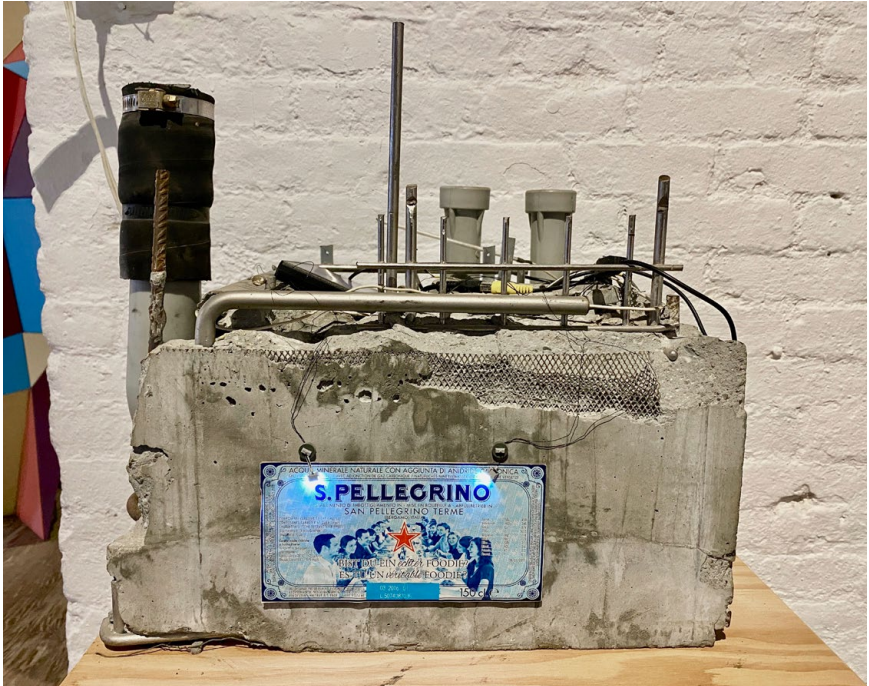
**Artist Info**

[2fikornot2fik.com](http://2fikornot2fik.com)

**2Fik & The Invisible Dog**

2Fik had three solo exhibitions at The Invisible Dog *2Fik or not 2Fik* (2011), *2Fik Museum* (2013), *3C by 2Fik* (2015). 2Fik has also presented a series of performances including *Cycle* in collaboration with Anne Mourier. He was also part of *Pride Music Festival* (2020). He will present a new exhibition at The Invisible Dog in 2022.

# Mathis Altmann



## Mathis Altmann

*The Cook Spitting in the Soup*

*of his Masters*, 2015

Mixed media

13 x 16.5 x 14.5 inches

## Image Description

A grey concrete block sculpture covered in cracks and discoloration with pipes, wires, and metals emerging from the inside.

A small lit-up label of S. Pellegrino is attached to the front surface of the piece.

*Mathis Altmann is the only artist of this exhibition I don't know personally. We never even exchanged an email or a DM (he doesn't have Instagram).*

*I love concrete and brutalism, and when I saw this piece at Frieze NYC in 2015, I literally fell in love with it. If you know him, would you make an introduction please?*

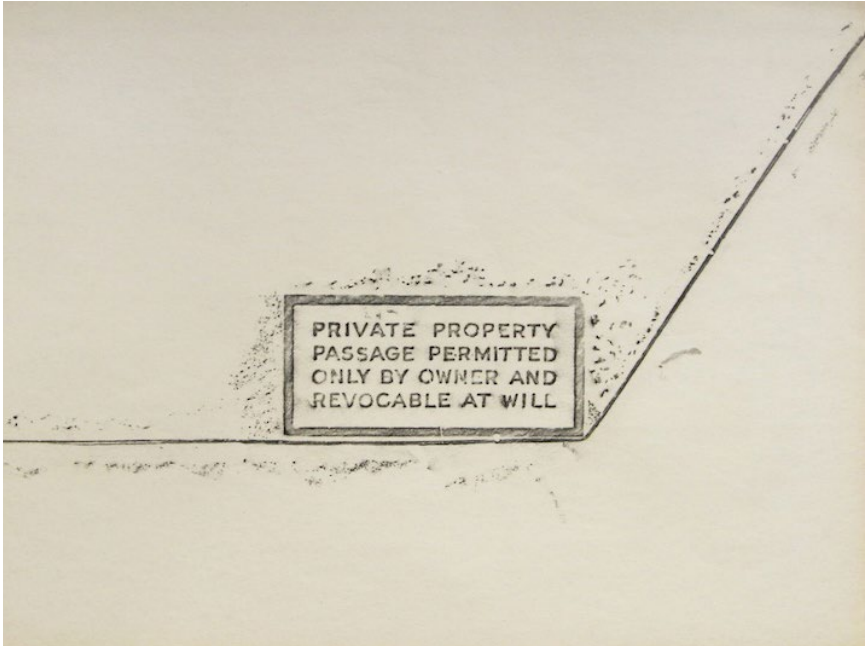
## Artist Info

Mathis Altmann (b. Munich, 1987) lives and works in Los Angeles and Zurich.

## Mathis Altmann & The Invisible Dog

Artwork purchased at Frieze NYC in 2015 at Freedman Fitzpatrick Gallery LA.

# Francisca Benitez



## Francisca Benitez

*Property Line: Cadman  
Plaza West and Pierrepont Street  
Brooklyn, 2008*  
Graphite floor rubbing on paper  
18 x 24 inches

### Image Description

A sign that says "Private Property Passage Permitted Only by Owner and Revocable at Will."

*Collecting artworks is also forgetting them. They end in a drawer, in storage. It's the case for Francisca Benitez's piece. The reunion was as happy as the day I purchased it at a marvelous show curated by Risa Shoup. Maybe artworks need to get some rest and protect themselves from their admirers.*

### Artist Info

[franciscabenitez.org](http://franciscabenitez.org)

### Francisca Benitez & The Invisible Dog

Artwork purchased at Bric Rotunda Gallery (Brooklyn, NY), exhibition *On Purpose* curated by Risa Shoup, 2012.

# Jean-Christian Bourcart



**Jean-Christian Bourcart**  
Camden, untitled #18,  
2008  
Digital C-print  
34.75 x 28.5 inches

## Image Description

A photograph of a man wearing a tan suit trying to climb the windows of a run-down warehouse building. The back of a light blue Chevrolet truck is seen in the foreground.

*Until recently, when I looked at this photograph by Jean-Christian Bourcart, part of the series he made at Camden, NJ in 2011, I saw a Santa Claus climbing, like this weird Christmas decoration people hang on the facade of their building. My imagination has changed since January 6, 2021, the day the Capitol was assaulted. The rioters climbing the symbol of democracy have exactly the same posture, the same movement. My childish vision has turned into a horror vision. Except that this man in a suit risked his life. I was scared for him. I'm scared of the others.*





**Jean-Christian Bourcart**

*Forbidden City, untitled #7,*  
2001

Digital C-print

16.5 x 22.3 inches

**Image Description**

A photograph of a couple engaging in oral sex in a room with red lighting. Their faces and half of their bodies are not visible. The perspective is of someone standing outside in a dark hallway and looking at the couple through the door opened ajar.

*I regret never having shown Forbidden City by Jean-Christian Bourcart, a series of photographs he took with a hidden camera in brothels in Paris and New York City. This photo is hung in my bedroom and I often close my eyes with a last glance at it.*

**Artist Info**

[jcbourcart.com](http://jcbourcart.com)

**Jean-Christian Bourcart & The Invisible Dog**

Jean-Christian Bourcart had one solo exhibition at The Invisible Dog, *Camden* (2013) and organized *Boundaries of the Visible* (2015) a symposium with Anne-Lise Large and François Soulages.

# Malcolm Brown



**Malcolm Brown**  
*Simon*, 2010  
Digital C-print  
17 x 20.75 inches

## Image Description

A photograph of a man standing in a dark storage room with a big mess of buckets, metals, and various other things in the background. Half of his face is out of the frame. He is carrying an opened medium-sized cardboard box with the remaining of his face inside.

*Last November, when Simon Courchel left New York City after 10 years and returned to Paris, he offered me this portrait taken by Malcolm Brown, long time artist resident at 51 Bergen. I should ask him why he did not take it with him but I'm afraid he will ask to take it back.*

## Artist Info

[malcolmbrown.net](http://malcolmbrown.net)

## Malcolm Brown & The Invisible Dog

Malcolm Brown was one of the first resident artists to join The Invisible Dog in 2009. He presented a solo exhibition, *The Artists of The Invisible Dog* in 2012.

# Simon Courchel



**Simon Courchel**  
*The Red Lion Inn*, 2012  
Fine art pigment print  
13 x 19 inches

## **Image Description**

A photograph of a man inside a bedroom lying in bed while looking at his laptop. The perspective is of someone standing outside in a hallway and looking at the man partially through the open door straight on. The room and the hallway have an ornate vintage-style wallpaper in blue and white.

*Attending a concert at Tanglewood—one of the most prestigious music festivals in the world—was on my “American Dream To Do List”. Staying at the Red Lion Inn, the iconic hotel, made this dream even more precious. Simon Courchel captured beautifully this intimate moment.*

## **Artist Info**

[simoncourchel.com](http://simoncourchel.com)

## **Simon Courchel & The Invisible Dog**

As dancer, Simon Courchel has performed at The Invisible Dog with Judith Sánchez Ruíz (2011), Fanny de Chaillé (2013), Yanira Castro (2013 and 2017), Jon Kinzel (2016), and Yoshiko Chuma (2019). As photographer, he was part of multiple group shows and has documented the life of The Invisible Dog for 12 years.

# Christopher Daniels



**Christopher Daniels**  
*We Pray for the Rule of a Righteous Kingdom*, 2015  
Crayola crayon and graphite on paper  
74.5 x 58.75 inches

**Image Description**  
An illustration of the Temple Mount and Al Aqsa Compound in the old city of Jerusalem with hundreds of people of different religions performing various activities such as demonstrations, riots, recreationals, and many more. Trees are also scattered all around.

*The winter benefit of everyone's beloved Wassaic Project was about to start when I arrived in the gallery. The staff was putting together the last details of the show and was hanging Christopher Daniels' drawing. It did not take me more than ten seconds to reserve it. A few days later, my friend Sylvain, former correspondent in the Middle East from the French newspaper Le Monde, came for lunch at home. He spent more time staring at "one of the most fabulous lessons of history" than eating the supposed fabulous meal I prepared. I still owe a dinner I promised to the artist.*

## **Christopher Daniels & The Invisible Dog**

Christopher Daniels presented this piece at the Invisible Dog for the winter benefit of Wassaic Project in 2016. It was purchased the same evening.

# Danielle Durchslag & Ryan Frank



## Danielle Durchslag and Ryan Frank

*A Wandering Sukkah*, 2015  
Printed vinyl, dibond,  
and aluminum  
98 x 42 x 42 inches

### Image Description

A sculpture that consists of aluminum panels in yellow, red, blue, and maroon that form a tall geometric cocoon.

*A Wandering Sukkah* by Danielle Durchslag and Ryan Frank is one of the rare pieces of art permanently installed at *The Invisible Dog*. We brought it from the garden into the gallery for this exhibition. The Sukkah traveled around the five boroughs. The day it returned to 51 Bergen Street, the sidewalk was like a big party.

### Artists Info

[danielledurchslag.com](http://danielledurchslag.com)

[ryanmfrank.com](http://ryanmfrank.com)

### Danielle Durchslag & The Invisible Dog

Danielle Durchslag has been part of several group exhibitions at *The Invisible Dog*. In 2015, she created the project *Assembly Required: A Wandering Sukkah* with Ryan Frank

### Ryan Frank & The Invisible Dog

Ryan Frank has been resident artist at *The Invisible Dog* for 6 years. He presented a solo exhibition in 2012, *Handmade Frames* and a [street art installation](#) on Bergen Street in 2017. In 2016, he collaborates with Andrea DeFelice for a site specific installation in the Glass House called *Rauder Thradur*. He was also part of several group exhibitions curated by *Recession Art* at *The Invisible Dog*. In 2014, he performed as "The Runner" in Thierry Thieû Niang's *Rite of Spring*. In 2015, with Danielle Durchslag, he created the project *Assembly Required: A Wandering Sukkah*.

# Nicolas Enriquez



**Nicolas Enriquez**  
*The Bloodline*, 2015  
Archivally framed and  
printed inkjet print  
13 x 19 inches

## **Image Description**

A black and white photograph of a man sitting in front of an open window in a dark room. The sunlight coming through the window is illuminating half of his face and body. The man's arms are making a gesture that looks like he's shooting with an imaginary shotgun.

*My friend Pauline Vermare—who by the way gave me the desire to curate this exhibition—proposed to me in 2015 to show the work of five young photographers who had just completed the Photojournalism and Documentary Photography program at the International Center of Photography (NYC). I loved Nicolas Enriquez's series about gangs in Brooklyn. We closed the show on a Sunday. On Tuesday, Enriquez received the Fujifilm Young Talent award 2015.*

## **Artist Info**

[nicolasenriquez.com](http://nicolasenriquez.com)

## **Nicolas Enriquez & The Invisible Dog**

Nicolas Enriquez was part of a photographs group show, *Rear Windows*, at The Invisible Dog curated by Pauline Vermare, ICP and Martine Fougeron in 2015.

# Shannon Finnegan



## Shannon Finnegan

*Do you want us here or not,*  
2018  
MDO, paint  
72 x 26 x 36 inches

Designed in consultation with  
Charles Mathis and Chat  
Travieso. Fabrication by  
Charles Mathis.

## Image Description

A bright blue bench with a text written in white letters on its surface that says "I'd rather be sitting. Sit if you agree."

*As a French person, I understand Shannon Finnegan so well when she says that NYC has so little public benches where you can sit, converse and rest (and kiss, I would add). She donated this bench to The Invisible Dog, because she knows how important it is for us to have this piece.*

## Artist Info

[shannonfinnegan.com](http://shannonfinnegan.com)

## Shannon Finnegan & The Invisible Dog

Shannon Finnegan had two solo exhibitions at The Invisible Dog. *Should/Can't* in the Glass House in 2014, *Reinventing my Strangeness* in 2017, and has been part of several group shows. She donated *The Museum Bench* to The Invisible Dog.

# Camille de Galbert



## Camille de Galbert

*Simon*, 2015

Film

12 minutes

[Watch the full film](#)

## Image Description

A man wearing a black suit with a white pillow wrapped around his head is standing on the snow-covered ground with his back arched backwards. Tipped wooden chairs are scattered all around him.

*I do not own this piece from Camille de Galbert; but I invited her to show this video for many reasons. First because we planned to have her solo exhibition in March 2021, postponed to next year. But also because, Simon, the main character in the video, has a special place in the history of The Invisible Dog.*

## Camille de Galbert & The Invisible Dog

Camille de Galbert is resident artist at The Invisible Dog. She will present her first NYC exhibition at The Invisible Dog in 2022.



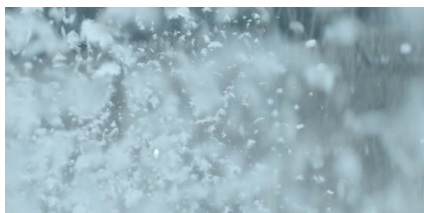


**Camille de Galbert**  
***Simon* (2015) Film Stills**  
*Simon #1*, 2015

Archival Digital Pigment prints on  
Hahnemühle Photo Rag Bright White 310 g/sm  
14 x 25 inches

Edition 2/10  
\$1,500.00

**Image Description**  
A white dog lying in bed.

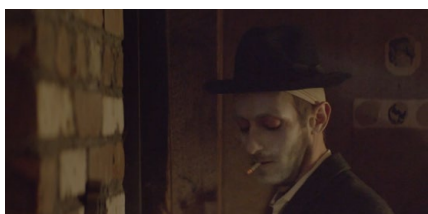


**Camille de Galbert**  
***Simon* (2015) Film Stills**  
*Simon #5*, 2015

Archival Digital Pigment prints on  
Hahnemühle Photo Rag Bright White 310 g/sm  
14 x 25 inches

Edition 2/10  
\$1,500.00

**Image Description**  
White feathers floating in the air.



**Camille de Galbert**  
***Simon* (2015) Film Stills**  
*Simon #3*, 2015

Archival Digital Pigment prints on  
Hahnemühle Photo Rag Bright White 310 g/sm  
14 x 25 inches

Edition 2/10  
\$1,500.00

**Image Description**  
A man wearing a black fedora hat with a lit cigarette in his mouth. His face is covered in white powder and he's looking down at the floor.



**Camille de Galbert**  
***Simon* (2015) Film Stills**  
*Simon #4*, 2015

Archival Digital Pigment prints on  
Hahnemühle Photo Rag Bright White 310 g/sm  
14 x 25 inches

Edition 2/10  
\$1,500.00

**Image Description**  
A man with a white pillow wrapped around his head. The pillow has a black stain in the center. The man is lying on the snow-covered ground and white feathers falling down on him.

# Oliver Jeffers & Mac Premo



## Oliver Jeffers & Mac Premo

*Untitled*, 2013

Pencil on paper  
17 x 19.75 inches

### Image Description

A brown rectangular paper with ripped edges that has a handwritten text that says "Please do not disturb this a rea." Right below is a smaller handwritten text that says "What is a rea?"

*Oliver Jeffers was preparing the exhibition Mulholland Hwang on the top floor of The Invisible Dog, at this time a 4,000 square foot loft. His drawings on large pieces of paper were on the floor. One morning he found a foot print on one of them. He posted this sign: "Do not disturb this area". And Mac Premo wrote the comment below. I saved the sign and framed it. It reminds me everyday the complicity and the friendship between the artists at 51 Bergen.*

### Artists Info

[oliverjeffers.com](http://oliverjeffers.com)

[macpremo.com](http://macpremo.com)

### Oliver Jeffers & The Invisible Dog

Oliver Jeffers is resident artist at The Invisible Dog. At The Invisible Dog, he presented an exhibition called *Mulholland Hwang* with Aaron Ruff in 2013, *Kickable* with Mac Premo in 2017, and *This Way Up/Handle With Care* in 2018.

### Mac Premo & The Invisible Dog

As a resident artists at The Invisible Dog, Mac Premo has created numerous performances, exhibitions, and installations such as, *The Luckiest Arab in Belfast* (2014), *It's Later Than You Think* (2014), *The Bunt Machine* (2017), *Kickable* with Oliver Jeffers (2017), and *The Six-Four-Three* (2018).

# Alan Kleinberg



## Alan Kleinberg

*Men's Toilet at Studio54,  
New York City' 1979,*  
2014

Gelatin Silver Print

Image: 11 x 14 inches

Framed: 17 x 21 inches

Edition 1/10

*I grew up with the myth of Studio 54. I was 15 in 1980. Curator John Silvis invited me to a gallery to visit Alan Kleinberg's exhibition. When I saw this photo, I had the feeling I could have been one of these guys. The bathroom was my favorite spot when I was clubbing.*

## Image Description

A black and white photograph of tightly packed men's bathroom. All the men are looking away from the camera, except one man with a mustache wearing a light-colored jacket who's looking straight to the camera.

## Artist Info

[alankleinbergphotography.com](http://alankleinbergphotography.com)

## Alan Kleinberg & The Invisible Dog

Alan Kleinberg was born in 1942. This piece was purchased at Outlet Fine Art/John Silvis.

# Noah Klersfeld



**Noah Klersfeld**  
*Bench*, 2017  
Wood  
46 x 60 x 16 inches

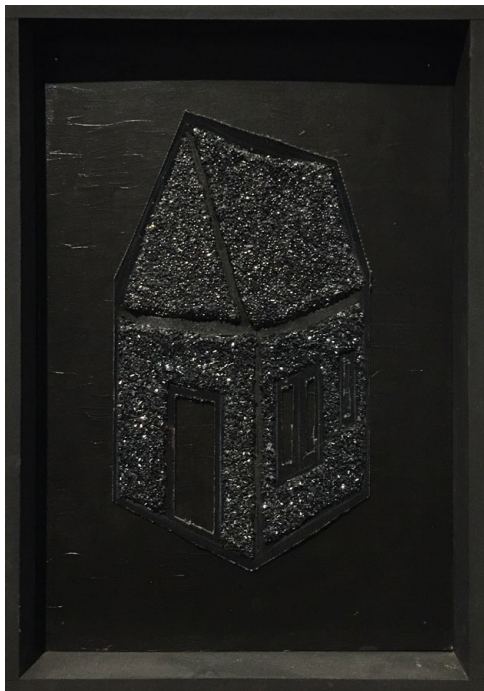
**Image Description**  
A rectangular C-shaped bench in tan wood.

*Noah Klersfeld was part of a group show at The Invisible Dog in 2010. We became friends and promised each other to collaborate again. In 2017, Klersfeld suddenly passed away. We never did a second show together. Mac Premo, resident artist at The Invisible Dog arranged to have this bench created by Klersfeld donated to our permanent collection.*

## **Noah Klersfeld & The Invisible Dog**

Noah Klersfeld was part of a group show in 2010 titled *If You See Nothing Say Something* curated by Kiya Kim.

# Steven & William Ladd



## Steven and William Ladd

*Shed Noir*, 2018

Board, paint, fiber, beads,  
metal, glue, MDF frame  
20.36 x 14.5 x 2.3 inches

### Image Description

A framed black board with  
a small sparkly black house  
in the center.

*Steven and William Ladd are the first artists I collaborated with when I arrived in America in 2009. They created the first-ever piece I commissioned, the monumental chandelier hanging in the ceiling located in the center of the gallery. Shed Noir is the last one I acquired because it narrates a family story. The Ladds are family.*

### Artist Info

[stevenandwilliam.com](http://stevenandwilliam.com)

### Steven and William Ladd & The Invisible Dog

Steven and William Ladd created the monumental chandelier of *The Invisible Dog* in 2009. They curated a group show, *Obstacle*, in 2011, and have had three solo exhibitions in the Main Gallery: *Shaboygen* (2012), *Chapel* (2015), *The Other Side* (2020).

# Anne Mourier



## **Anne Mourier**

*Frank*, 2013

Metal and fabric  
8 x 8 x 8 inches

## **Image Description**

A green metal cube with a circular clear window. A collection of white and grey fabrics can be seen in the inside. A size label that says "XL" is also visible.

*Anne Mourier invited me once for a studio visit. While she was talking about her new body of work, my attention was attracted to a green box, hidden behind her desk, below a shelf. I left the studio with the piece under my arm. Long after, I told her how much I like this piece. She smiled and confessed that the fabric inside the box was a collection of underwear of her husband who also happened to be my landlord. I wonder if he knows that I own an intimate part of him.*

## **Artist Info**

[annemourier.com](http://annemourier.com)



**Anne Mourier**

*Little Box*, 2010

Found and altered miniatures  
5.5 x 7.5 x 3 inches

**Image Description**

A small box that consists of a group of miniatures such as a mop, a trash can, a green bucket, cleaning supplies, a wall clock, and two arms sticking out of the wall trying to clean the floor with a mop.

*This is one of the first pieces I purchased from Anne Mourier. When I look at it, I'm stunned by the evolution of her work—from domestic boxes to caring performance—you may have followed as well if you are a regular visitor at The Invisible Dog. I'm glad to own this early work. It's like the starting point of my admiration for her work and the beginning of our friendship.*

**Anne Mourier & The Invisible Dog**

Anne Mourier is resident artist at The Invisible Dog since 2009. She presented her first ever solo exhibition at The Invisible Dog in 2013, *Cleaning It Up*, in the Glass House she also designed, followed by *Elevation* (2017) in the main gallery. She has also presented a series of *Taking Care* performances and dinner since 2017.

# Stephen Morrison



**Stephen Morrison**  
*Into the Thick Warm  
Dusty Air, 2020*  
Epoxy clay, cloth, oil  
5 x 8 x 13 inches

## **Image Description**

A small sculpture of a shirtless dog lying on his side on a white mattress, propped up on one elbow, and his hand supporting his head. There is a white blanket covering him from the waist down and a tray of cigarettes in front of him.

*Stephen Morrison says that I have inspired him to make this piece. He knows better than anyone else about my propensity towards a bed based lifestyle. I do everything in bed, except smoking.*

## **Artist Info**

[stephenmorrisonstudio.com](http://stephenmorrisonstudio.com)

## **Stephen Morrison & The Invisible Dog**

Stephen Morrison is a resident artist at The Invisible Dog since 2020. In September 2021, he will present his first ever solo exhibition in the main gallery of The Invisible Dog.



# Christopher Robin Nordström



## Christopher Robin Nordström

*Koban*, 2020

Various materials  
15.5 x 8.75 x 13.5 inches  
1:20 scale replica

### Image Description

A miniature of a police building with discolored light brown paint. On top of the building, there's a small green sign that says "Koban".

*I offered this piece created by Swedish artist Christopher Robin Nordström to my lover for his birthday in April 2020. We decided to marry each other during a trip in Japan. If you read the text explaining why this piece is the center of the exhibition, you will understand the power of art in our daily life.*

### Artist Info

[@tokyobuild](https://www.instagram.com/tokyobuild)

## Christopher Robin Nordström & The Invisible Dog

Christopher Robin Nordstrom lives and works in Stockholm (Sweden) This piece has been purchased via his Instagram account.

# Naji Raji



## **Nāji Raji**

*Home Protection*, 2019  
Kilim with handstitching  
210 x 150 inches

### **Image Description**

A brown kilim rug with various symbols, lines, and shapes, such as triangles, squares, circles, and an eye. Everything is handstitched with different thread colors such as black, dark brown, and magenta.

*During a trip to Beirut, Lebanon, my friend Rima discovered Naji Raji's work. She emailed me right away because she knew I would love it. I did not hesitate a second. The rug is handwoven by Egyptian artisans, the country of my parents.*

### **Artist Info**

[@najibeirut](https://www.instagram.com/najibeirut)

### **Naji Raji & The Invisible Dog**

Artwork purchased at Artlab Gallery in Beirut in 2018.

# Aaron Ruff



## Aaron Ruff

*The Stand Off*, 2013  
Wood/diorama materials  
9.5 x 11.5 x 5.25 inches

## Image Description

A miniature of a three-story house and three cows standing on a grass field with a wire fence. One cow is standing on the roof of the house while the other two cows are standing on the grass far apart and facing each other. The entire piece is positioned vertically on the wall.

*I remember the day in 2012 when Aaron Ruff and Oliver Jeffers came with an idea for a site-specific installation for *The Invisible Dog*, “a battle between animals that usually never fight together.” “That’s it?” I asked. “That’s it!” they answered. Mulholland Hwang was one the most memorable shows we presented in 12 years. And Aaron Ruff—who is jewelry maker/artist-in-residence at *The Invisible Dog*—never made more pieces despite my insistence.*

## Artist Info

[digbyandiona.com](http://digbyandiona.com)

## Aaron Ruff & The Invisible Dog

Aaron Ruff is a jewelry maker and resident artist at The Invisible Dog. In 2013, in collaboration with Oliver Jeffers, he presented an exhibition called *Mulholland Hwang*.

# Alexandria Smith



**Alexandria Smith**  
*Dissident Gardens*, 2014  
Mixed media collage  
on board  
30 x 40 inches

## Image Description

A collage of a scene that depicts a group of flying creatures high in the sky and below them, there are white picket fences, a black and green field, and black plants.

*One day I visited the studio of a young, brilliant and talented artist in Brooklyn, Alexandria Smith. The painting of a young girl with a fist in her mouth never left my mind. I should have acquired it. And everytime I look at the piece you are looking at, I wonder what this young girl has become.*

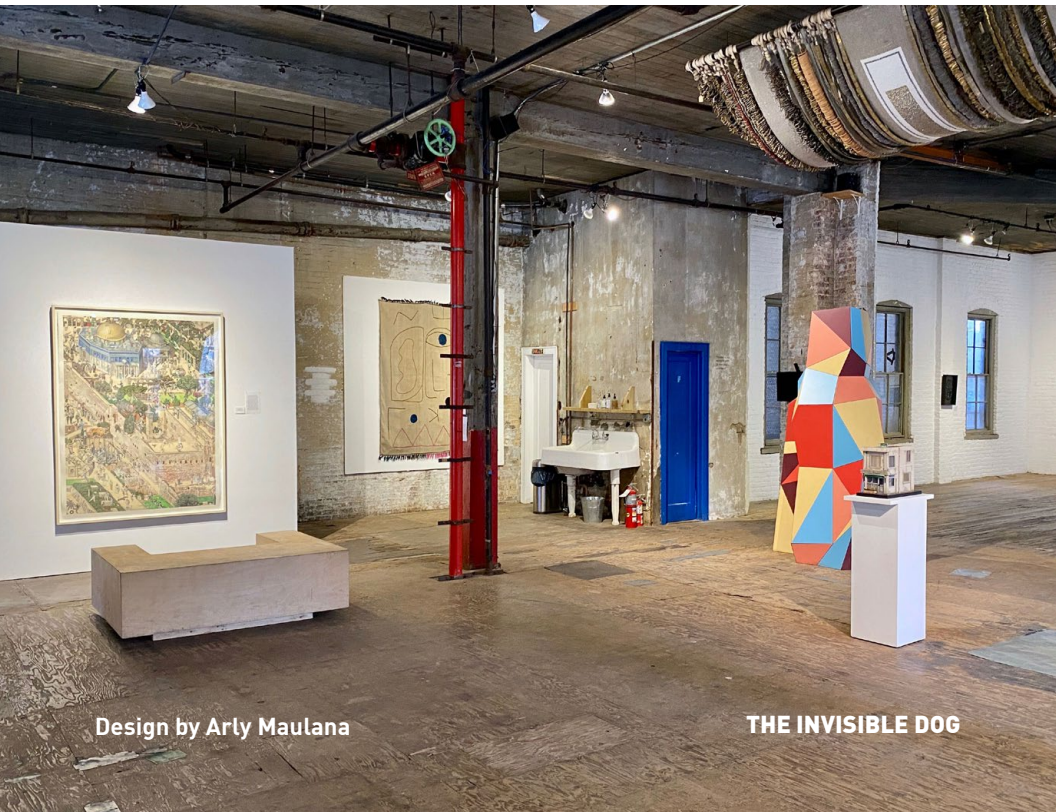
## Artist Info

[alexandriasmith.com](http://alexandriasmith.com)

## Alexandria Smith & The Invisible Dog

Alexandria Smith lives and work in London. This piece was purchased at Scaramouche Gallery (NYC).





Design by Arly Maulana

THE INVISIBLE DOG